



Self-diagnosis D4 indicator light blinks fifteen times.

Check the state of installation of NM (NO speed sensor).

OK?

NO

Reinstall and recheck.

YES

Disconnect the transmission sub-harness connector.

Measure the resistance between the No.5 terminal and No.6 for the NM speed sensor.

Is the resistance 400–600 ohms?

NO

Replace the NM speed sensor.

YES

Reconnect the transmission sub-harness connector.

Disconnect the E(26P) connector from the ECU.
Connect the Test Harness "A" connector to the wire harness only, not to the ECU. (14-47)

Measure the resistance between A8 and A7 terminals.

Is the resistance 400–600 ohms? (20°C)

NO

Check for continuity between A7 terminal and body ground.

YES

Disconnect the transmission sub-harness connector.

Measure the resistance between the No.9 terminal of the transmission sub-harness connector and No.10 for the NC speed sensor.

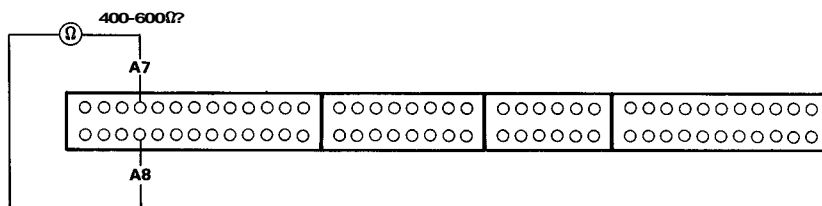
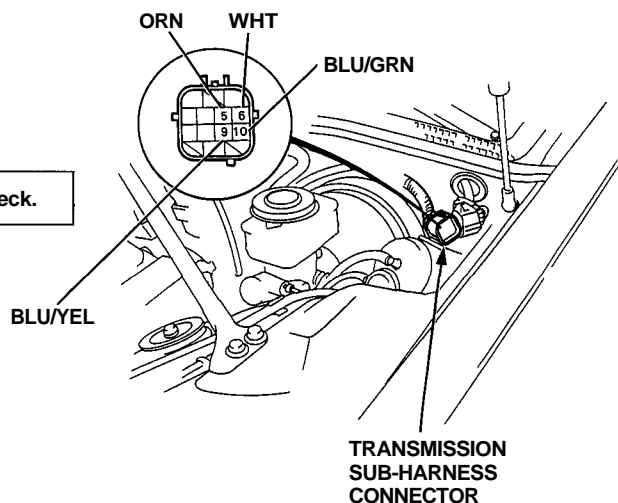
Is there continuity?

YES

Repair short in ORN wire between E7 terminal and the NM speed sensor.

NO

Check for continuity between A7 terminal and the NM speed sensor.



NOTE: The section A of the Test Harness with the Test Harness Adapter corresponds to the E (26P) connector of the ECU.

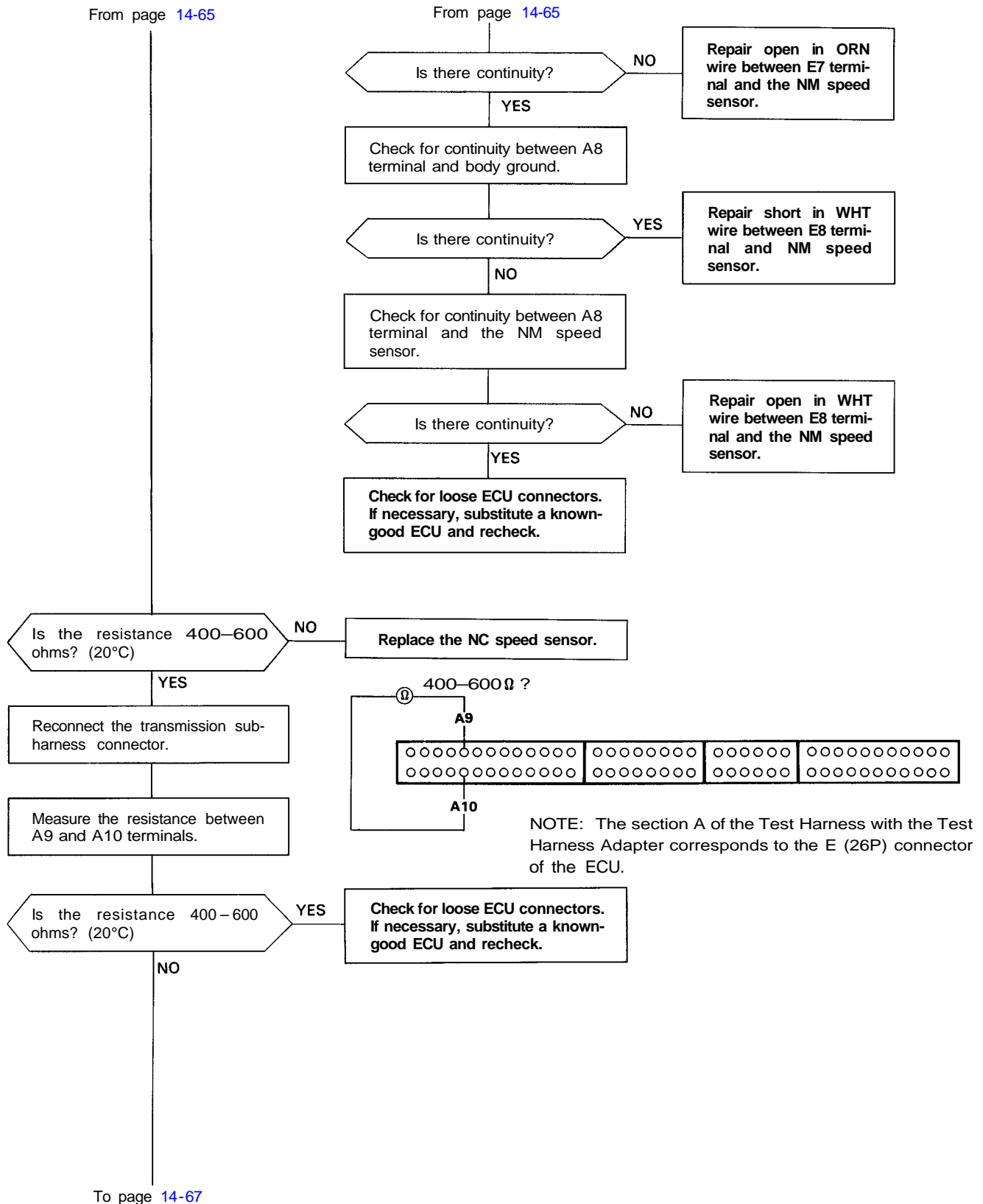
To page 14-66

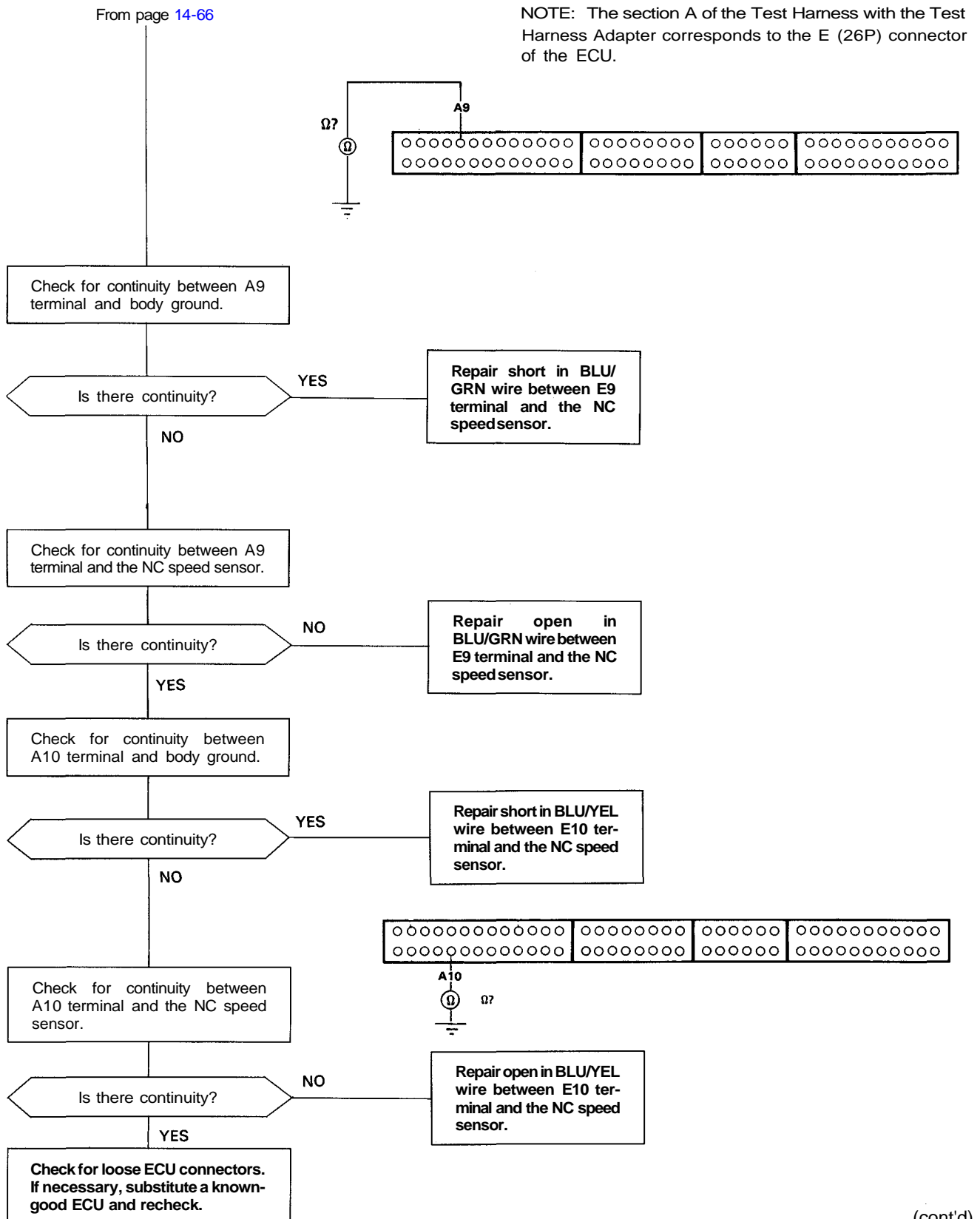
To page 14-66

(cont'd)

Electrical Troubleshooting

Troubleshooting Flowchart (cont'd)





(cont'd)